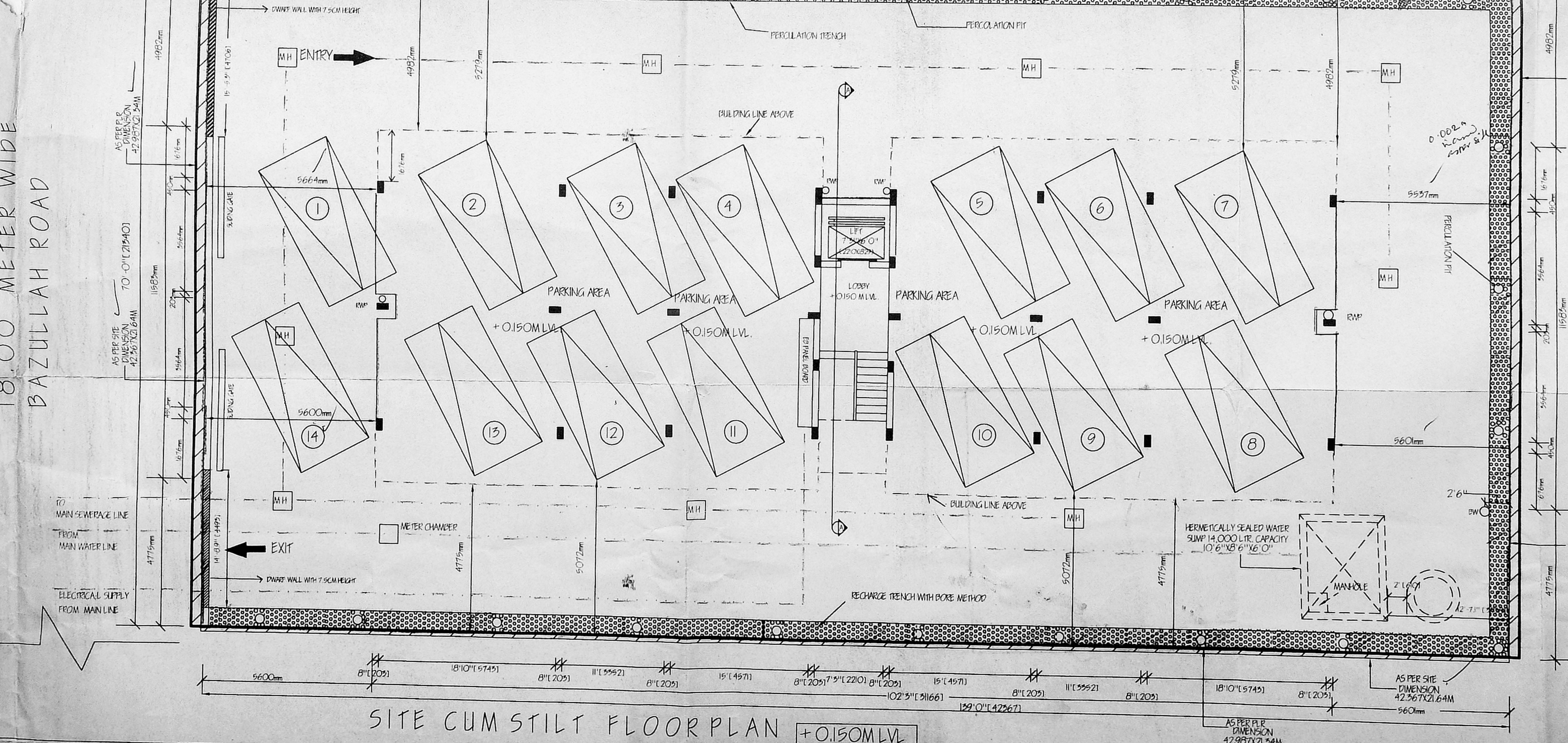
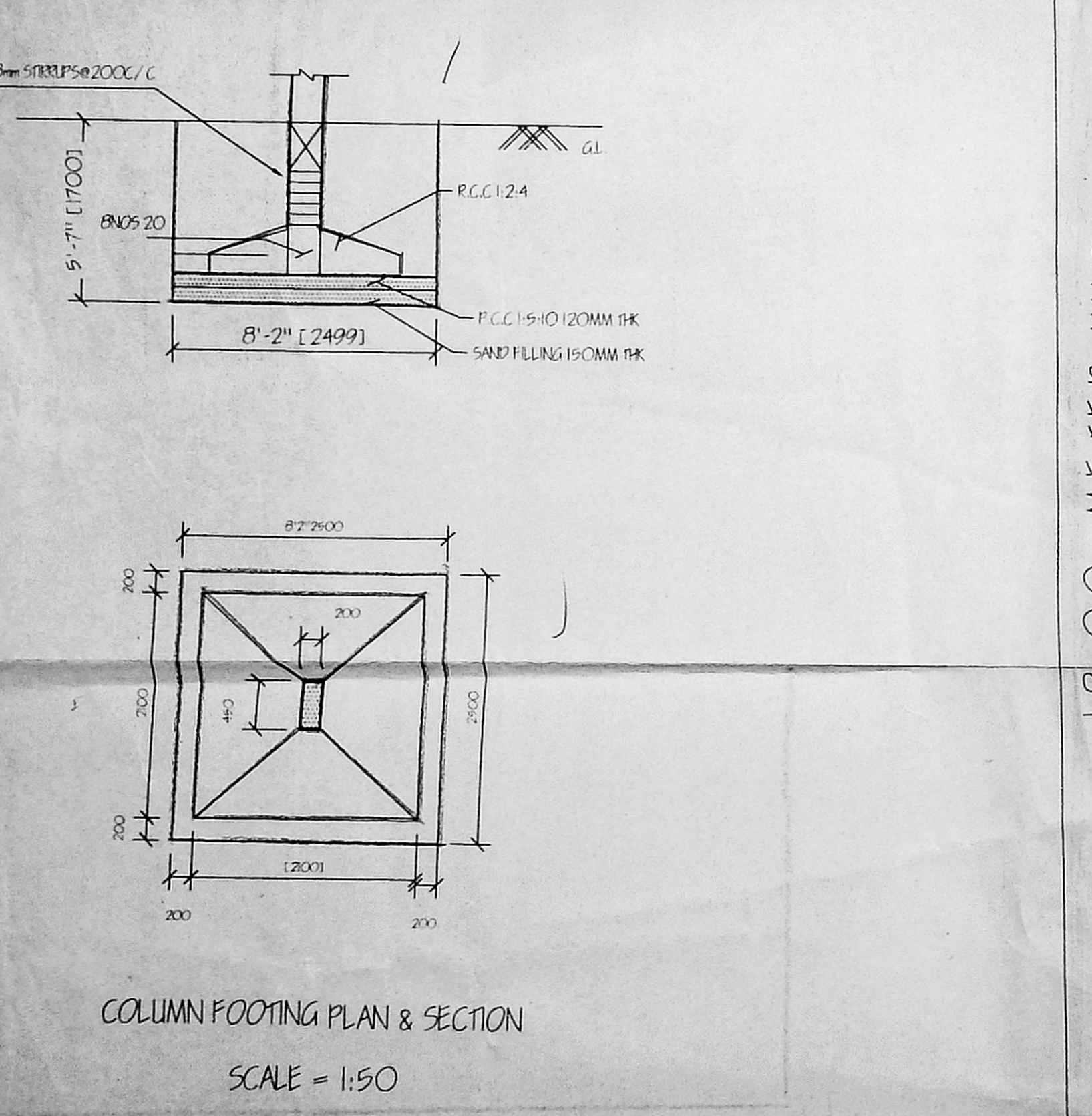
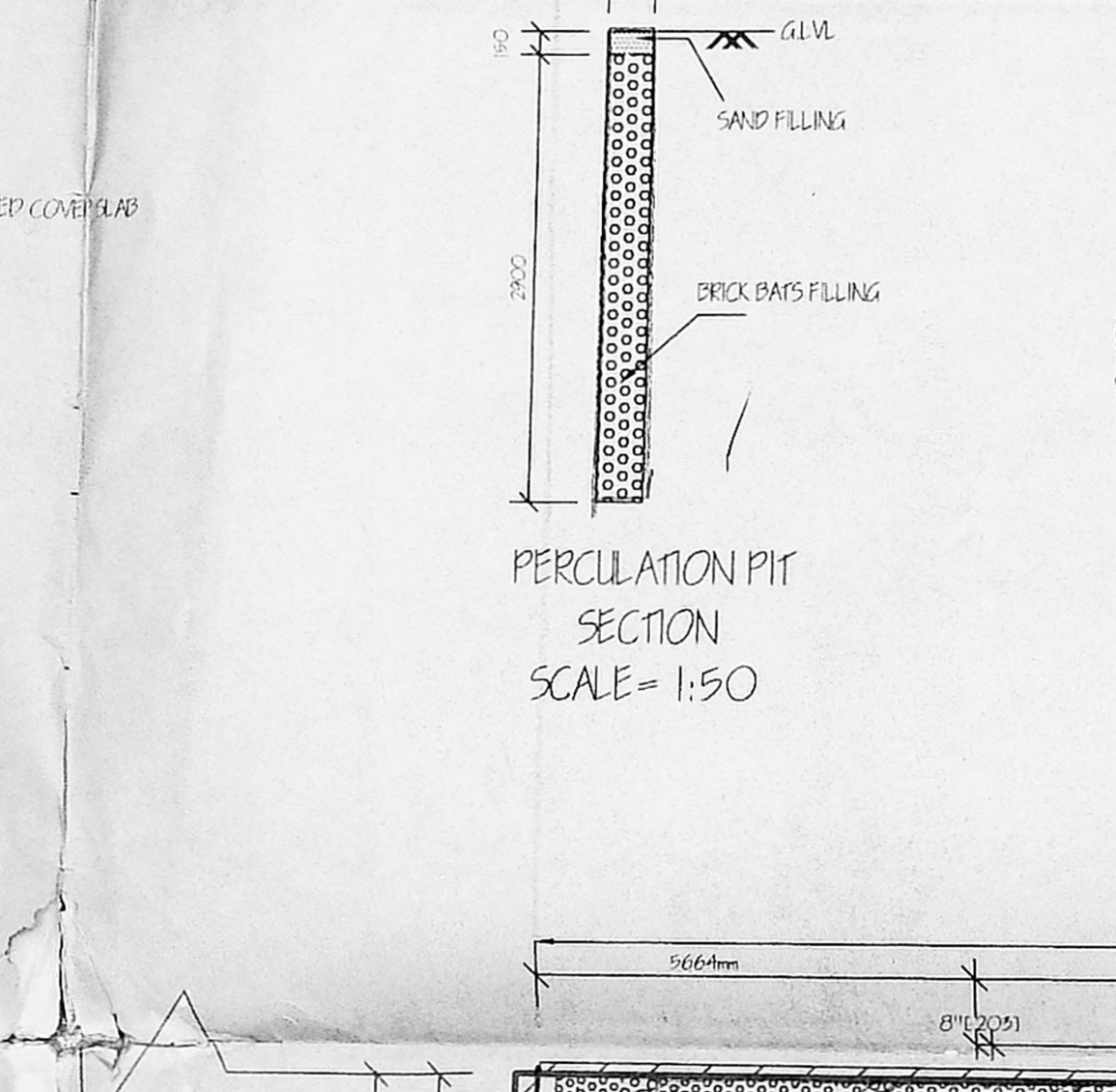
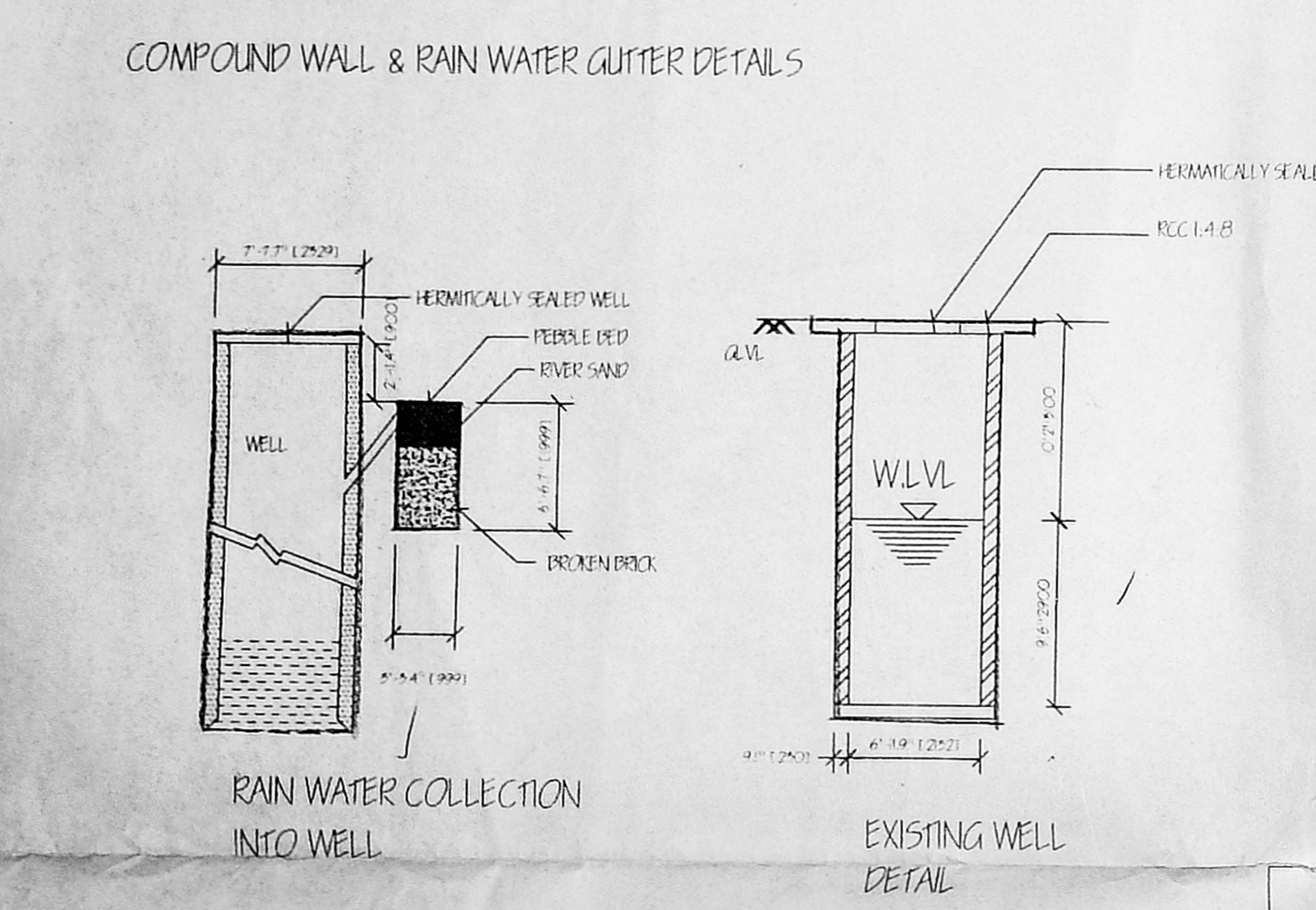
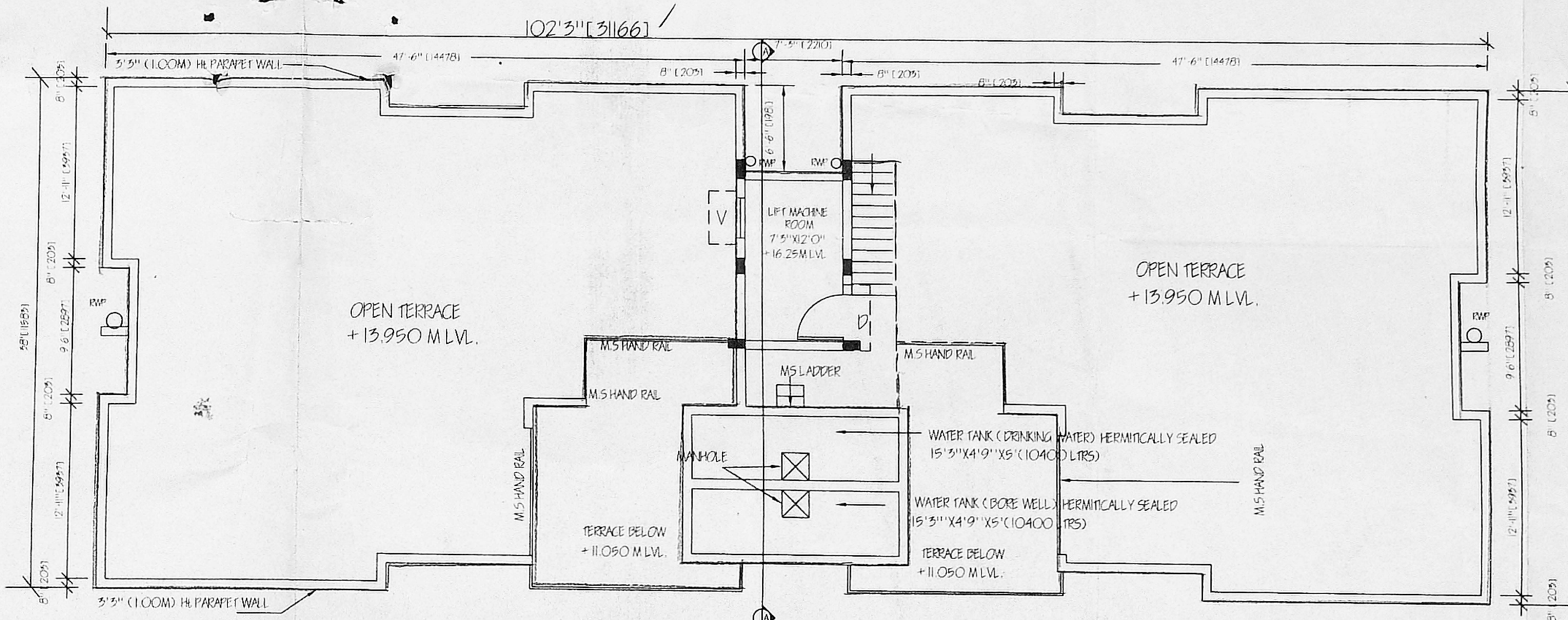
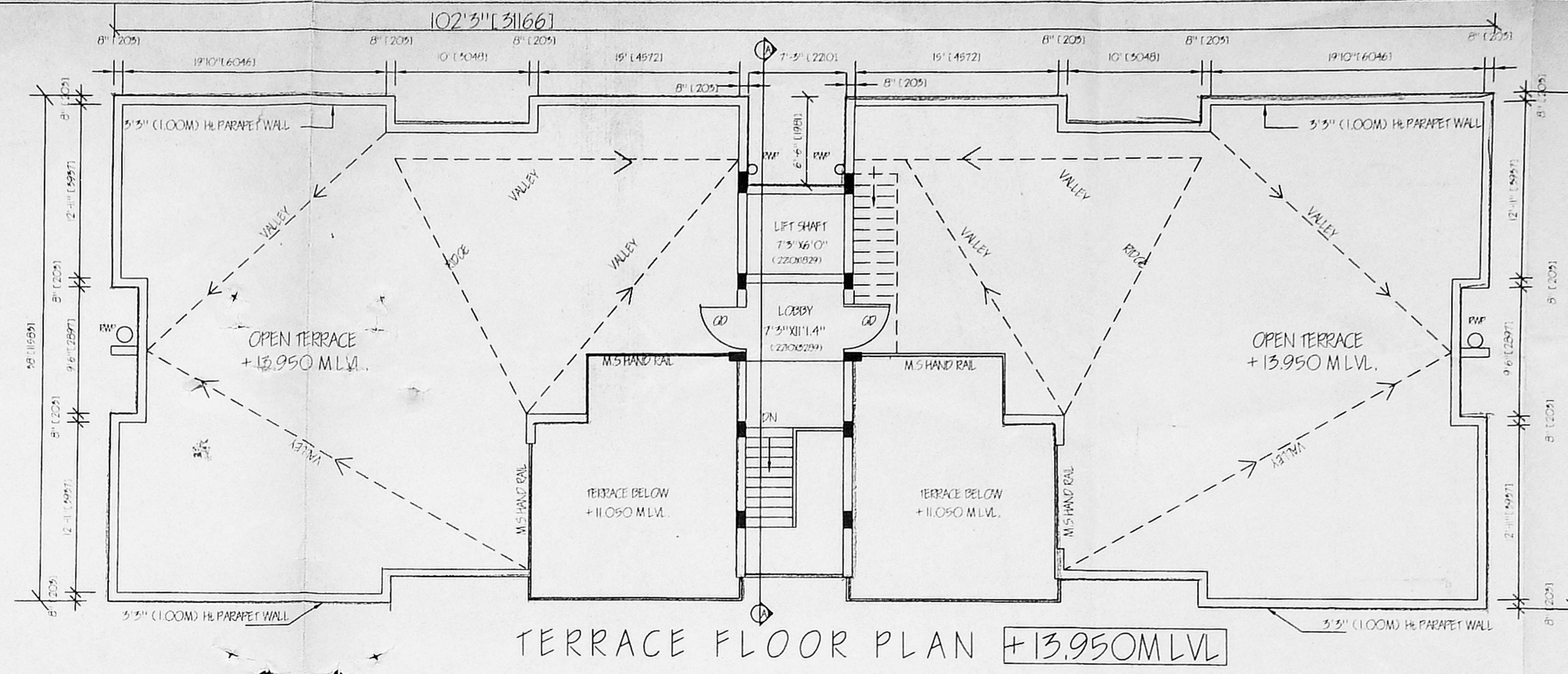
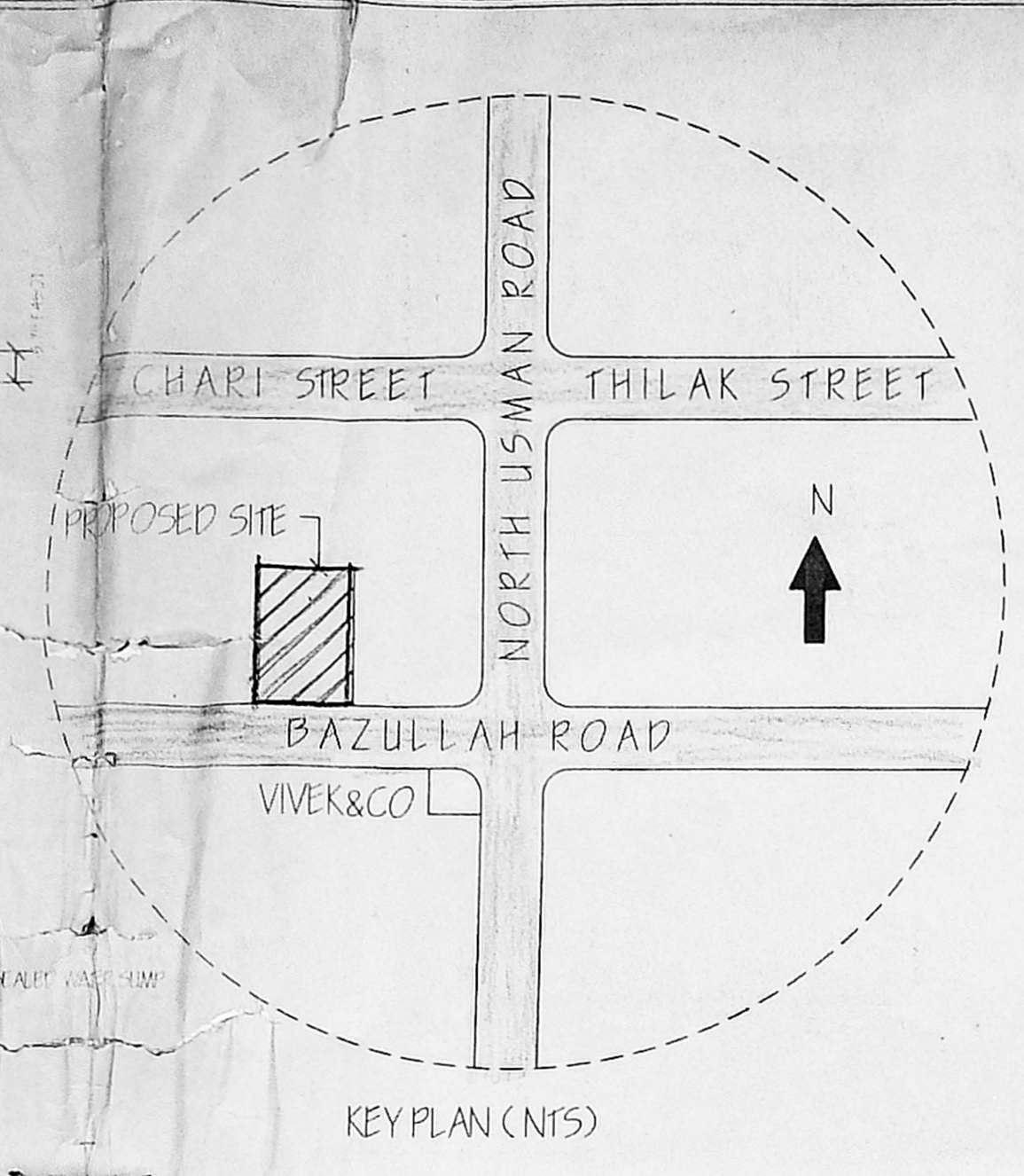


**APPROVED**  
 SUBJECT TO THE CONDITIONS IN THIS OFFICE ORDER No. B/2/8745/03, Date 8-2-2003  
 FOR MEMBER SECRETARY CHENNAI METROPOLITAN DEVELOPMENT AUTHORITY CHENNAI-600 008.



**GENERAL SPECIFICATIONS**  
 01. SAND FILLING WITH FINE RIVER SAND  
 02. FOUNDATION CONCRETE IN MIX 1:1.5:5  
 03. WALL WITH HOLLOW BLOCK MASONRY IN CM 1:5  
 04. FLOOR SLAB STRUCTURE STANDARD IN 200MM HD IN CM 1:5  
 05. FLOOR P.C.C IN MIX 1:4:8 FINISHED WITH CERAMIC TILE  
 06. PLASTERING EXTERIOR AND INTERIOR IN 1:4  
 07. CEILING PLASTER IN MIX 1:2:10  
 08. FINISHING EXTERIOR WALLS WITH CEMENT PAINTS  
 09. FINISHING INTERIOR WALLS WITH CEMENT PAINTS  
 10. FINISHING INTERIOR FLOORS WITH POLISHED TERRAZZO  
 11. FINISHING INTERIOR ROOFS WITH POLISHED TERRAZZO  
 12. FINISHING INTERIOR STAIRS WITH POLISHED TERRAZZO  
 13. FINISHING INTERIOR LIFTS WITH POLISHED TERRAZZO  
 14. FINISHING INTERIOR TOILETS WITH POLISHED TERRAZZO  
 15. FINISHING INTERIOR KITCHENS WITH POLISHED TERRAZZO  
 16. FINISHING INTERIOR BATHS WITH POLISHED TERRAZZO  
 17. FINISHING INTERIOR BED ROOMS WITH POLISHED TERRAZZO  
 18. FINISHING INTERIOR HALLS WITH POLISHED TERRAZZO  
 19. FINISHING INTERIOR LIVING ROOMS WITH POLISHED TERRAZZO  
 20. FINISHING INTERIOR DINING ROOMS WITH POLISHED TERRAZZO  
 21. FINISHING INTERIOR BREAK ROOMS WITH POLISHED TERRAZZO  
 22. FINISHING INTERIOR OFFICES WITH POLISHED TERRAZZO  
 23. FINISHING INTERIOR STORES WITH POLISHED TERRAZZO  
 24. FINISHING INTERIOR GARAGES WITH POLISHED TERRAZZO  
 25. FINISHING INTERIOR PORCHES WITH POLISHED TERRAZZO  
 26. FINISHING INTERIOR BALCONIES WITH POLISHED TERRAZZO  
 27. FINISHING INTERIOR TERRACES WITH POLISHED TERRAZZO  
 28. FINISHING INTERIOR ROOFS WITH POLISHED TERRAZZO  
 29. FINISHING INTERIOR STAIRS WITH POLISHED TERRAZZO  
 30. FINISHING INTERIOR LIFTS WITH POLISHED TERRAZZO  
 31. FINISHING INTERIOR TOILETS WITH POLISHED TERRAZZO  
 32. FINISHING INTERIOR KITCHENS WITH POLISHED TERRAZZO  
 33. FINISHING INTERIOR BATHS WITH POLISHED TERRAZZO  
 34. FINISHING INTERIOR BED ROOMS WITH POLISHED TERRAZZO  
 35. FINISHING INTERIOR HALLS WITH POLISHED TERRAZZO  
 36. FINISHING INTERIOR LIVING ROOMS WITH POLISHED TERRAZZO  
 37. FINISHING INTERIOR DINING ROOMS WITH POLISHED TERRAZZO  
 38. FINISHING INTERIOR BREAK ROOMS WITH POLISHED TERRAZZO  
 39. FINISHING INTERIOR OFFICES WITH POLISHED TERRAZZO  
 40. FINISHING INTERIOR STORES WITH POLISHED TERRAZZO  
 41. FINISHING INTERIOR GARAGES WITH POLISHED TERRAZZO  
 42. FINISHING INTERIOR PORCHES WITH POLISHED TERRAZZO  
 43. FINISHING INTERIOR BALCONIES WITH POLISHED TERRAZZO  
 44. FINISHING INTERIOR TERRACES WITH POLISHED TERRAZZO  
 45. FINISHING INTERIOR ROOFS WITH POLISHED TERRAZZO

**NOTE:**  
 ALL DIMENSIONS WITHIN BRACKETS ARE IN MM  
 CMDA (B) / NO. 1  
 EC AND B/2/8745/03  
 P.A. 24/3/03  
 SEWER 25/7/03  
 WATER 25/7/03  
 EXISTING

**SCHEDULE OF JOINERY DOORS**

D	1/ W/ FLUSH DOOR	750 X 2100
D1	1/ W/ FLUSH DOOR	975 X 2100
D2	1/ W/ FLUSH DOOR	1050 X 2100
GD	GRILL DOOR	975 X 2100

**WINDOWS**

W	1/ W/ GLAZED WINDOW	2400 X 1550
W1	1/ W/ GLAZED WINDOW	1200 X 1950
W2	1/ W/ GLAZED WINDOW	1800 X 1950
KW	1/ W/ GLAZED WINDOW	1200 X 900
BW	1/ W/ GLAZED WINDOW	1800 X 1550

**VENTILATORS**

V	GLAZED VENTILATOR	600 X 750
---	-------------------	-----------

**AREA STATEMENT**

PLOT AREA	904.11 sqm (42.567 x 21.54 M)
GROUND FLOOR AREA	25.52 sqm
FIRST FLOOR AREA	344.46 sqm
SECOND FLOOR AREA	344.46 sqm
THIRD FLOOR AREA	344.46 sqm
FOURTH FLOOR AREA	296.208 sqm
TOTAL BUILT UP AREA	1553.108 sqm
PLOT COVERAGE	25.57%
FSI	1.49

CLASS I LICENSED SURVEYOR

**PRAMOD MADHAVAN, B. Arch**  
 Member Council of Architecture CA-74-4405  
 Fellow Indian Institute of Architecture, F-5104  
 Architect and Surveyor, CLASS-1, No. RA24,  
 FORMAT - Architecture and Interior Architecture,  
 5, 8th Cross Street, Kappagam - 600 018  
 ADVAR, MADRAS-600 020, TEL. NO. 42121

**OWNER / POWER OF ATTORNEY**  
**RAMCONS (INDIA) PROPERTIES PRIVATE LIMITED**  
 Managing Director / Director

SCALE 1:100  
 SHEET 1 OF 2

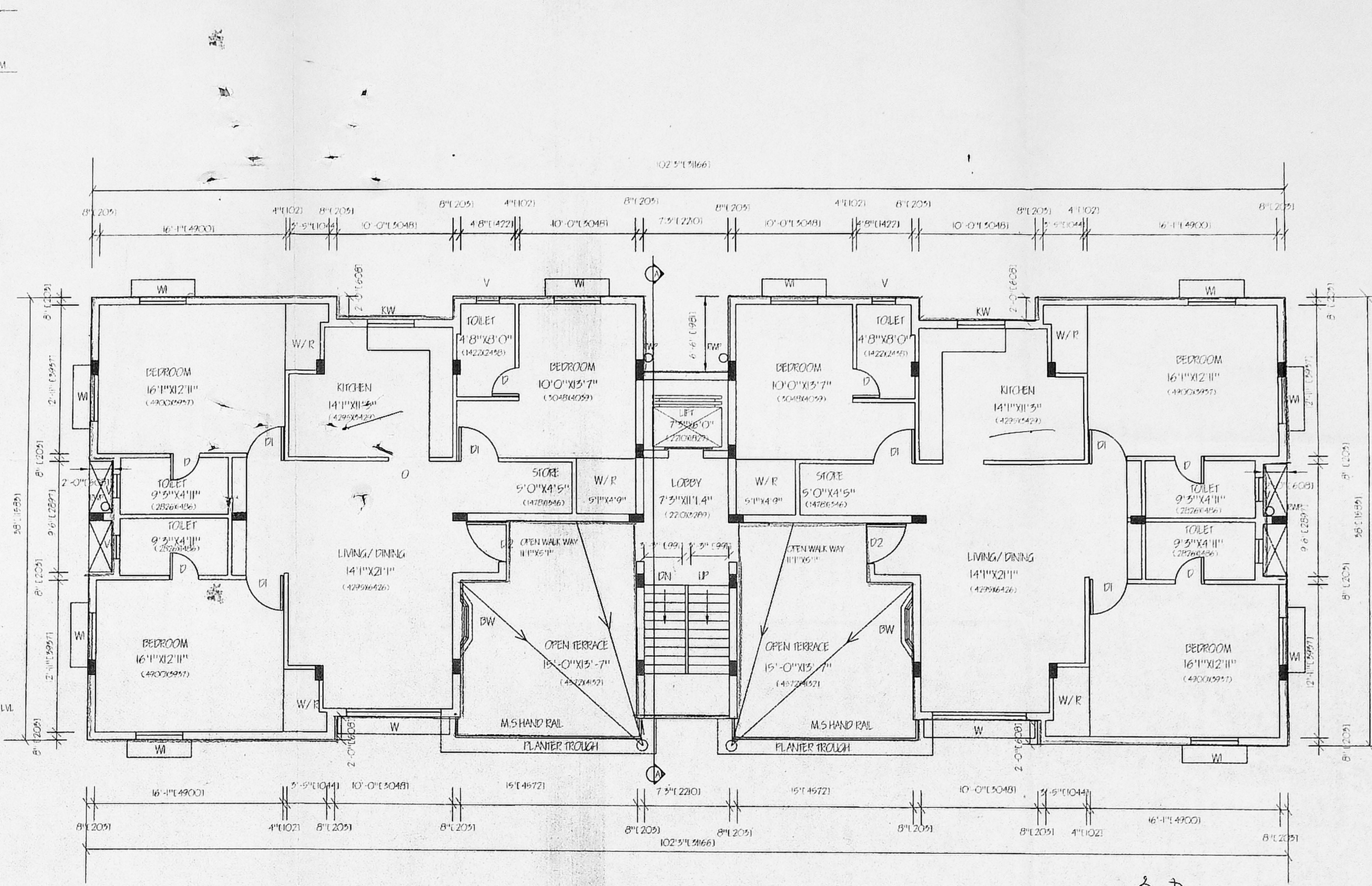
**P.P.T.L.E.**  
 PROPOSED RESIDENTIAL BUILDING FOR  
 RAMCONS (INDIA) PROPERTIES PVT. LTD.  
 AT DOOR NO. 44 / 45,  
 NEW NO. 90, BAZULLAH ROAD, T. NAGAR, CHENNAI-600017,  
 T.S. NO. 469B PART  
 NEW T.S. NO. 7791 / 4 & 5, BLOCK NO. 106,  
 OLD SURVEY NO. 98, MAMBALAM-GUNDY-TALK, CHENNAI DISTRICT.

OFFICE COPY

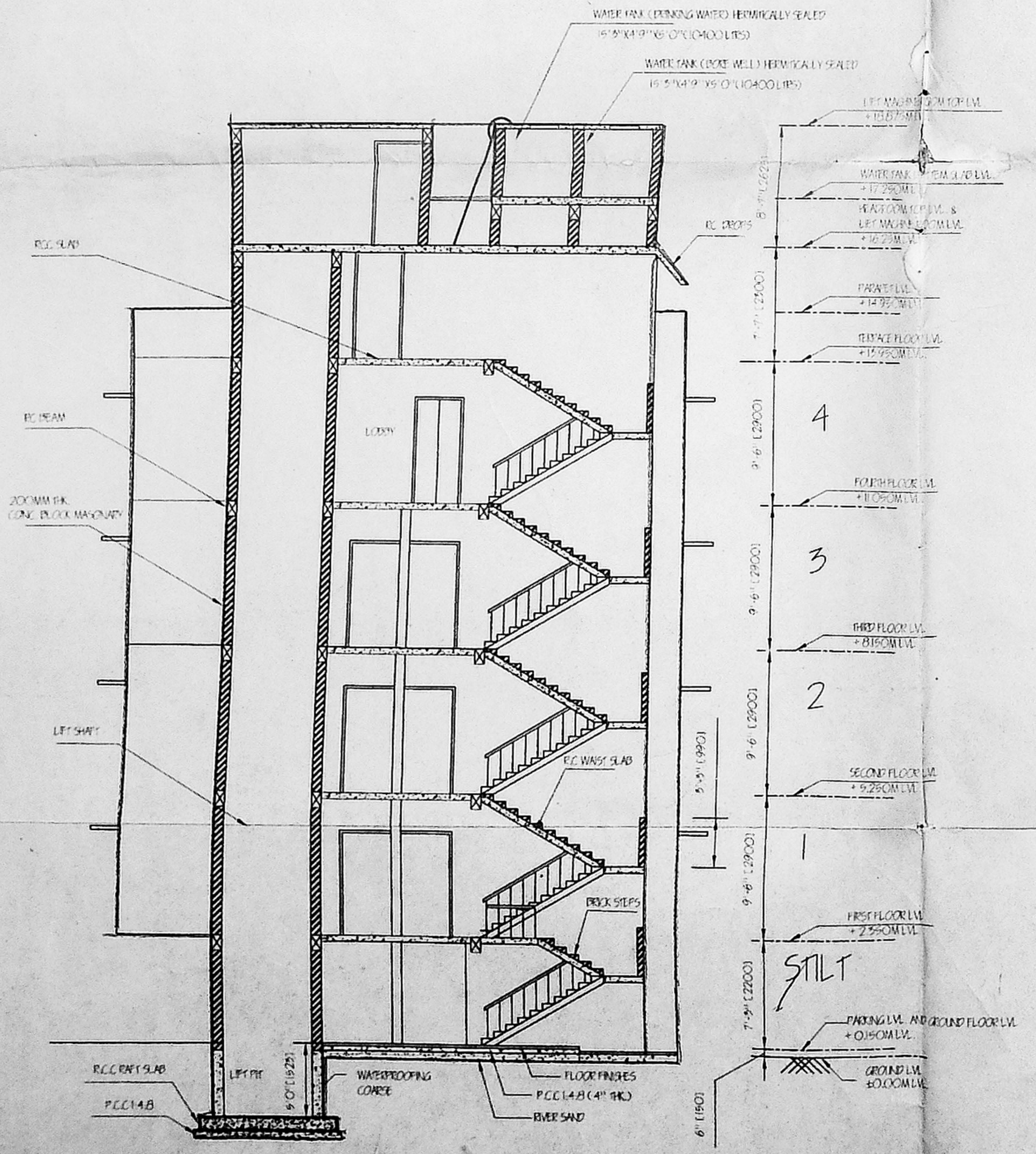
Planning Permit No. P/SP/108/349/19/2005  
**APPROVED**  
 SUBJECT TO THE CONDITIONS IN THIS OFFICE ORDER  
 FOR MEMBER SECRETARY  
 CHENNAI METROPOLITAN  
 DEVELOPMENT AUTHORITY  
 CHENNAI-600 005



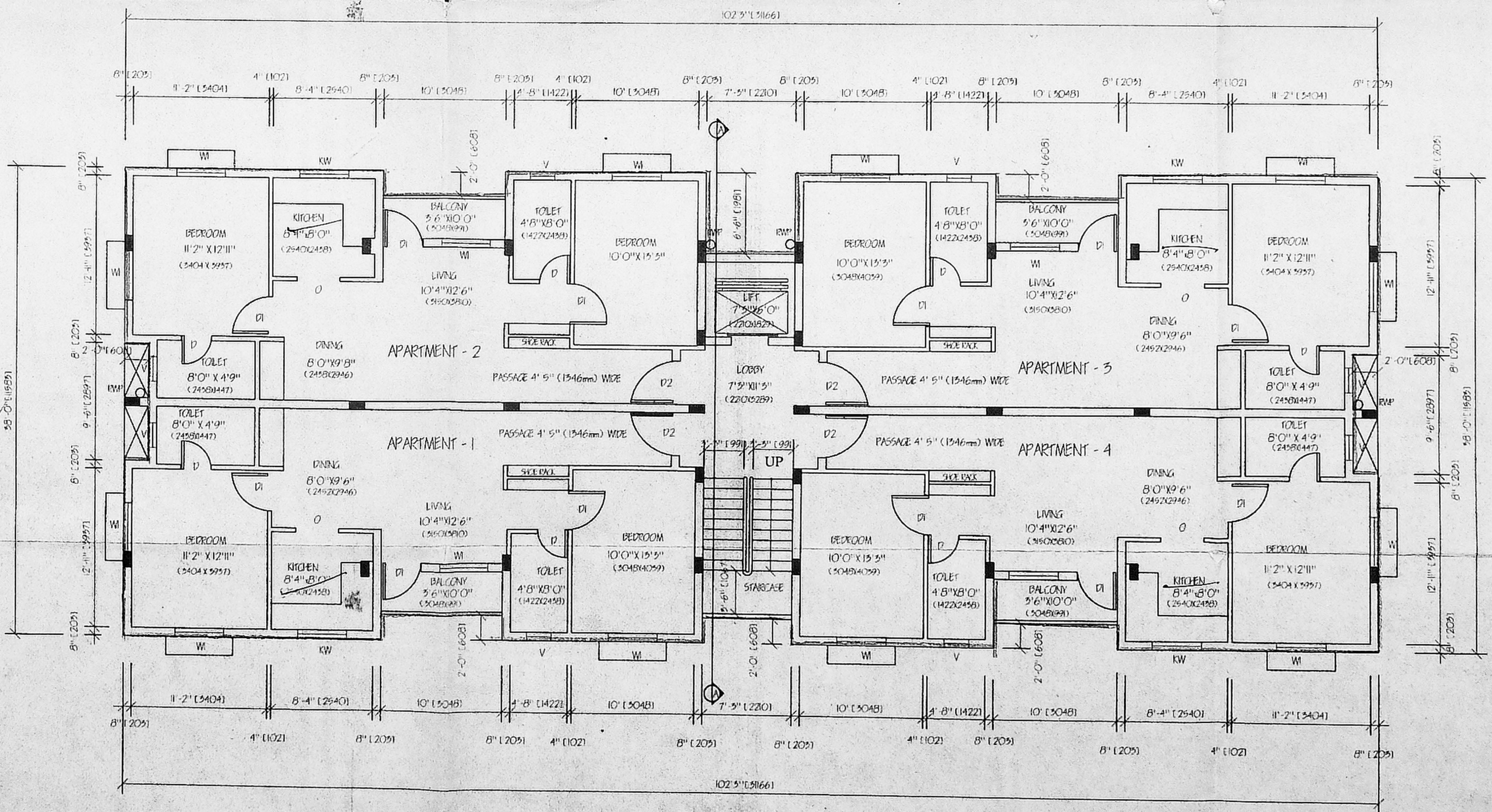
EAST SIDE ELEVATION



FOURTH FLOOR PLAN +11.050 MLVL  
 FOURTH FLOOR AREA : 296.208 SQ.M



SECTION AT A-A



TYPICAL FLOOR PLAN (FOR 1st, 2nd & 3rd FLOOR)  
 FIRST FLOOR AREA : 344.465 SQ.M

- GENERAL SPECIFICATIONS
- SAND FILLING WITH PURE RIVER SAND
  - FOUNDATION CONCRETE IN MIX 1:1.5:3
  - WALL WITH RED BRICK BLOCK (AS PER IS:1914) WITH PLASTER ON BOTH SIDES
  - ROOFING WITH 120MM THICK CONCRETE BLOCK IN C.M.1:4
  - FLOOR FINISH WITH 40MM THICK POLISHED TERRAZZO TILE
  - PLASTER ON EXTERIOR AND INTERIOR IN C.M.1:4
  - CEILING FINISH WITH POP IN 12mm THICK
  - PAINTING WITH EMULSION PAINT
  - WASHING COURSE WITH BRICK, RUBY AND LINE
  - DOORS AND WINDOWS TO BE IN WELL REASONED TEAK WOOD AND PAINTED WITH APPROVED PAINTS
  - STEEL FRAME IN R.C.C. TO BE CONFORMING TO IS:800
  - ALL DIMENSIONS TO BE IN METERS UNLESS OTHERWISE SPECIFIED

- LEGEND
- PROPOSAL
  - PLOT BOUNDARY
  - ROAD
  - SEWER LINE
  - ELECTRICITY LINE
  - WATER LINE
  - EXISTING

SCHEDULE OF JOINERY

DOORS

D	1/ W/FLUSH DOOR	750 X 2100
D1	1/ W/FLUSH DOOR	975 X 2100
D2	1/ W/FLUSH DOOR	1050 X 2100
D3	GATE DOOR	975 X 2100

WINDOWS

W	1/ W/ GLAZED WINDOW	2400 X 1550
W1	1/ W/ GLAZED WINDOW	1200 X 1550
W2	1/ W/ GLAZED WINDOW	1800 X 1550
KW	1/ W/ GLAZED WINDOW	1200 X 900
BW	1/ W/ GLAZED WINDOW	1800 X 1550

VENTILATORS

V	GLAZED VENTILATOR	600 X 750
---	-------------------	-----------

CLASS I LICENSED SURVEYOR

**RAMOD MADHAVAN, B. Arch**  
 Member Council of Architecture CA-74-4405  
 Fellow Indian Institute of Architecture F-5104  
 Architect and Interior Architect, FORMAT : Architecture and Interior Architecture, 3, 6th Cross Street, Karpagam Gardens, ADYAR, MADRAS-600 020. TEL : 4513121

OWNER/ POWER OF ATTORNEY

**RAMCONS (INDIA) PROPERTIES PRIVATE LIMITED**  
 Managing Director / Director

SCALE 1:100  
 SHEET 2 OF 2

TITLE:  
 PROPOSED RESIDENTIAL BUILDING FOR  
 RAMCONS (INDIA) PROPERTIES PVT. LTD.  
 AT DOOR NO.44/45,  
 NEW NO.90,BAZILLAH ROAD,11NAGAR,CHENNAI-600017,  
 T.S.NO.469B PART  
 NEW T.S.NO.7791/4 & 5,BLOCK NO.106,  
 OLD SURVEY NO.98,MAMBALAM-GUNDY-TALKU,  
 CHENNAI DISTRICT.

4x3=12 D.J.  
 Paper 1425